

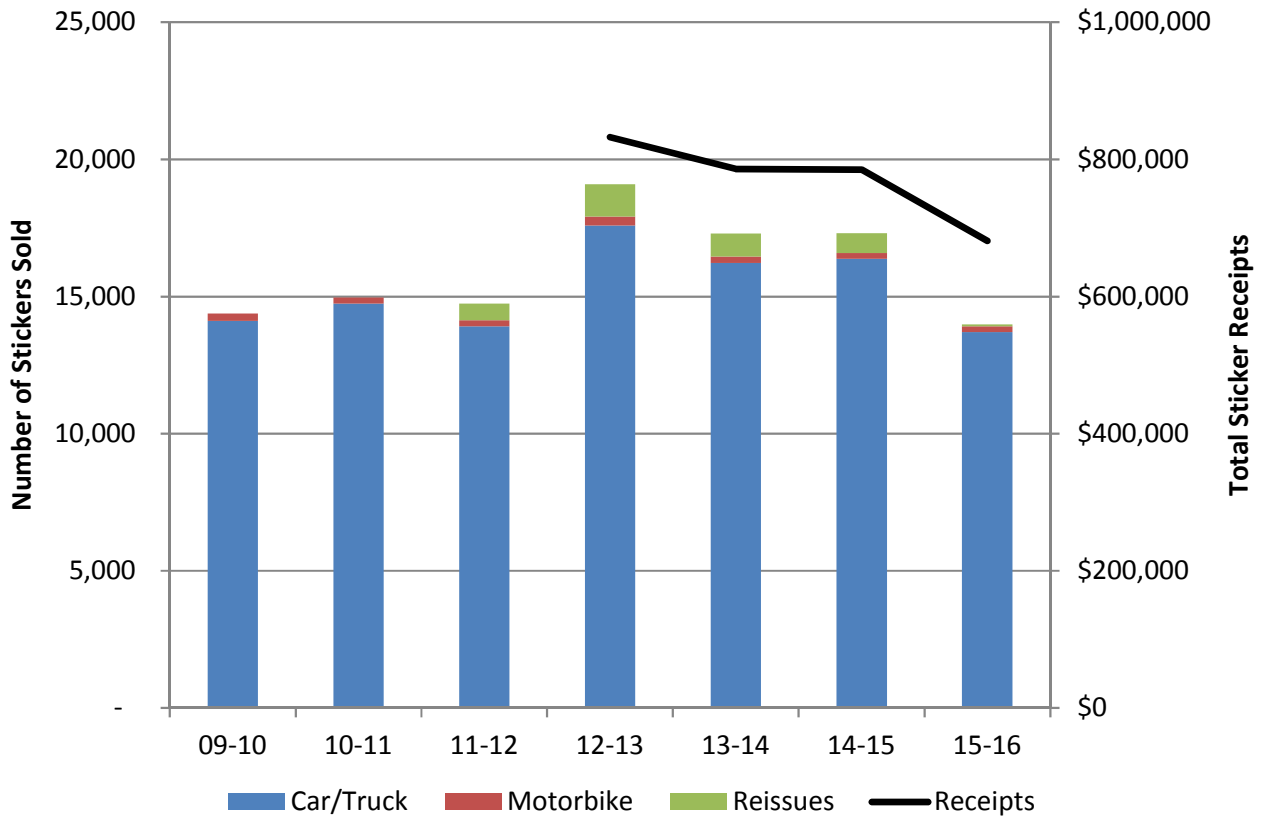
City of Murray
2015-2016 City Sticker Sales
May 31, 2015

	City Stickers Issued			
	2014-2015¹		2015-2016²	
	QTY	\$	QTY	\$
Truck & car	12,223	\$ 611,150	13,010	\$ 650,750
Truck & car - Prorated	4,150	116,968	690	3,281
<i>Subtotal</i>	<u>16,373</u>	<u>\$ 728,118</u>	<u>13,700</u>	<u>\$ 654,031</u>
Motorbike	187	\$ 4,675	209	\$ 5,225
Motorbike - Prorated	24	413	2	5
<i>Subtotal</i>	<u>211</u>	<u>\$ 5,088</u>	<u>211</u>	<u>\$ 5,230</u>
Reissues	719	719	65	\$ 65
Late fees		50,925	549	\$ 21,615
Totals	<u>17,303</u>	<u>\$ 784,850</u>	<u>14,525</u>	<u>\$ 680,941</u>
Difference			(2,778)	\$ (103,909)

1 City sticker receipt dates 4/1/2014 - 3/31/2015

2 City sticker receipt dates 4/1/2015 - 5/31/2015

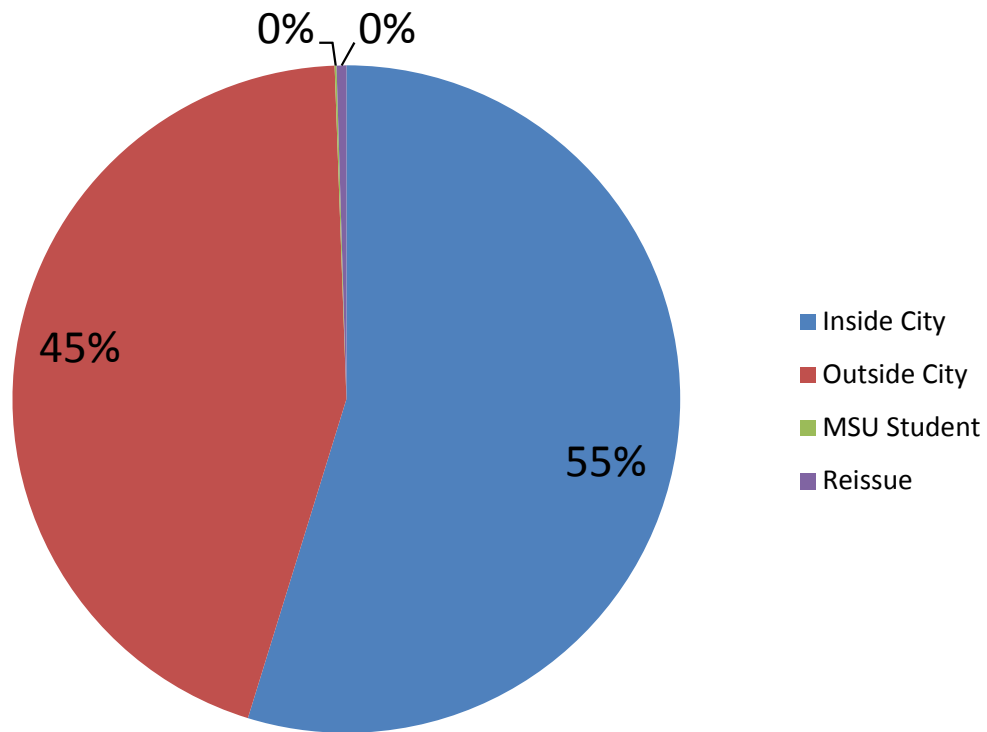
City Stickers Issued by Year



City of Murray
2015-2016 City Sticker Sales
 May 31, 2015

Class	2015-2016
Inside City	7,654
Outside City	6,243
MSU Student	14
Reissue	65
Total	13,976

2015-2016 Series Stickers Issued



City of Murray
2015-2016 City Sticker Sales
 May 16, 2015

Week	2014-2015	2015-2016	Difference	
			Total	%
1	191	631	440	330%
2	257	1,237	1,420	417%
3	317	1,201	2,304	401%
4	392	1,261	3,173	374%
5	730	1,197	3,640	293%
6	1,041	1,289	3,888	233%
7	1,431	1,917	4,374	200%
8	1,924	1,732	4,182	167%
9	5,535	3,518	2,165	118%
Total	11,818	13,983		

City Stickers by Week

